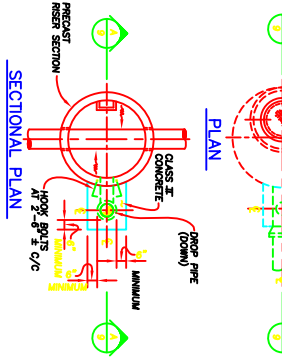
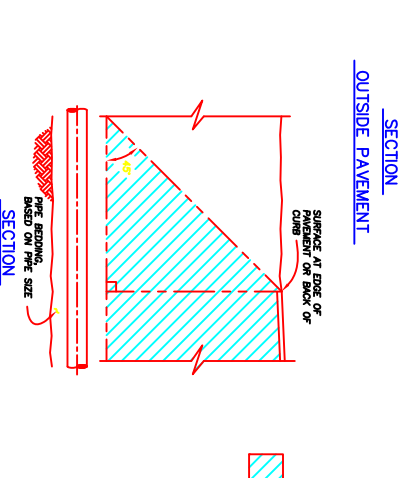
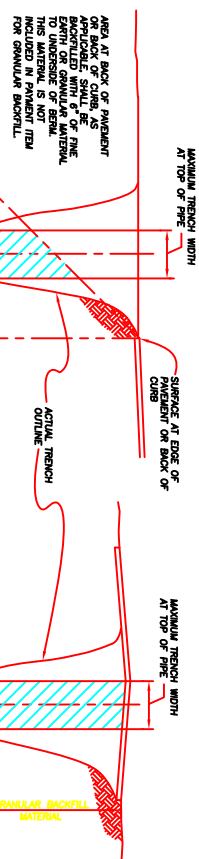
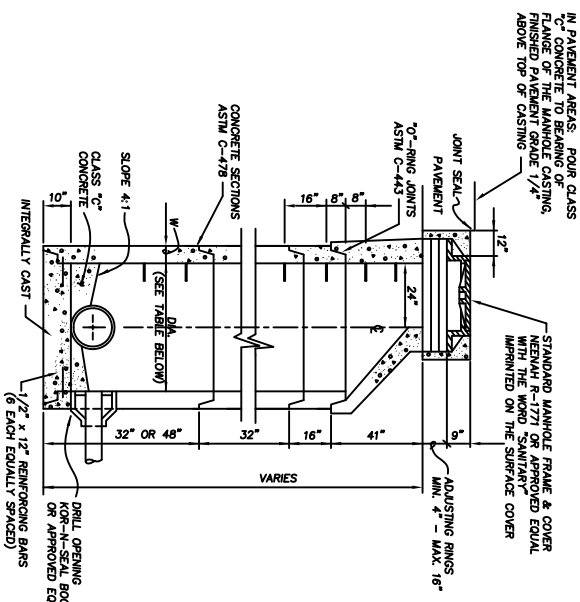


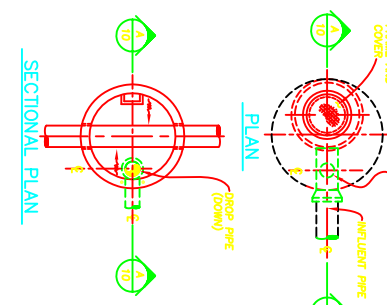
THE CITY OF OREGON SANITARY SEWER DETAILS



STANDARD MANHOLE TYPE 2 AND TYPE 3	
INSIDE DIAMETER	MANHOLE SIZE
48"	48"
54"	54"
60"	60"
66"	66"
72"	72"
78"	78"
84"	84"

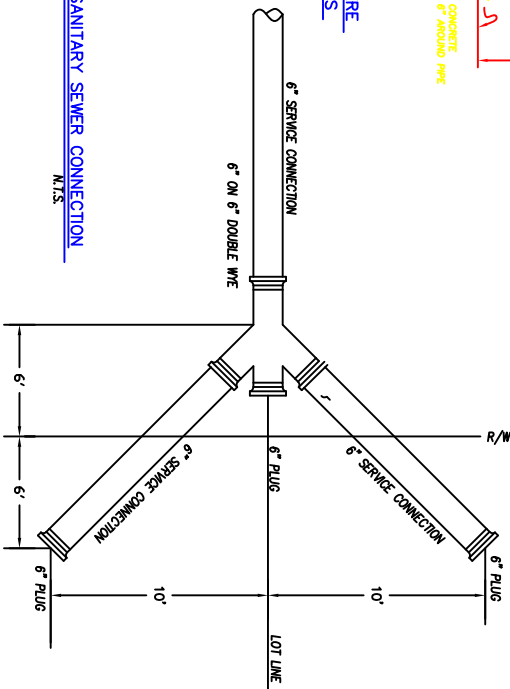


TYPE 2 STANDARD MANHOLE DETAIL
N.T.S.



SECTIONAL PLAN
N.T.S.

DROP CONNECTION OUTSIDE FOR PROPOSED MANHOLES
N.T.S.



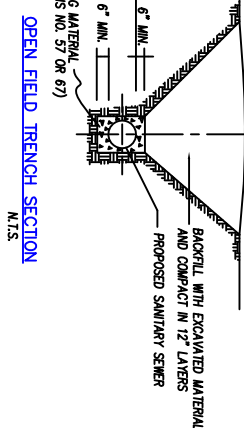
DOUBLE LOT SANITARY SEWER CONNECTION
N.T.S.

RISERS WHERE DEPTH OF MAIN SEWER EXCEEDS 12'-0"
SECTION

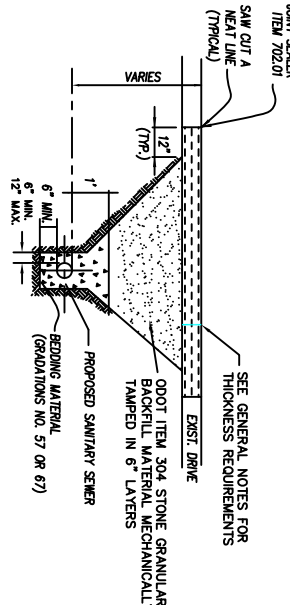
SANITARY SERVICE CONNECTIONS
N.T.S.

SERVICE CONNECTION WHERE DEPTH OF MAIN SEWER IS LESS THAN 12'-0"
SECTION

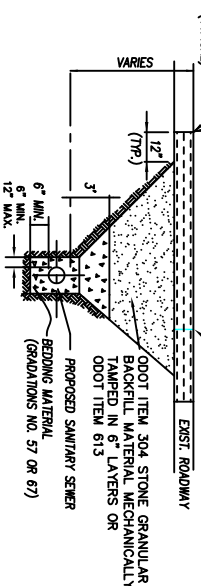
GROUND SLIGHTLY FOR FUTURE SETTLEMENT AND SHOULD NOT BE DISTURBED BY TRENCHING



OPEN FIELD TRENCH SECTION
N.T.S.



DRIVEWAY TRENCH SECTION
N.T.S.



ASPHALT ROADWAY AND COMMERCIAL DRIVEWAY TRENCH SECTION
N.T.S.

NOTE: THE COST OF PAVEMENT REPLACEMENT SHALL BE INCLUDED IN THE UNIT PRICE BID FOR SANITARY SEWER PIPE.

ASPHALT ROADWAY ENTIRE SECTION

- 1-1/2" ITEM 448 ASPHALT CONCRETE SURFACE COURSE PG 64-22
- 1-1/2" ITEM 254 PAVEMENT PLANING, ASPHALT CONCRETE
- ITEM 408 BITUMINOUS PRIME COAT @ 0.40 GAL./S.Y.

ASPHALT ROADWAY TRENCH SECTION

- 1-1/2" ITEM 448 ASPHALT CONCRETE SURFACE COURSE PG 64-22
- 2-1/2" ITEM 301 ASPHALT CONCRETE BASE
- ITEM 408 BITUMINOUS PRIME COAT @ 0.40 GAL./S.Y.
- VARIES ITEM 304 AGGREGATE BASE (COST TO BE INCLUDED WITH COST OF WATERLINE)

ASPHALT DRIVEWAY SECTION

- 1-1/4" ITEM 412 ASPHALT DRIVEWAY MIX PG 64-22
- 1-3/4" ITEM 448 ASPHALT CONCRETE INTERMEDIATE COURSE (DRIVEWAY)
- VARIES ITEM 408 BITUMINOUS PRIME COAT @ 0.40 GAL./S.Y.
- VARIES ITEM 304 AGGREGATE BASE (COST TO BE INCLUDED WITH COST OF WATERLINE)
- (REPLACEMENT TO BE FROM EDGE OF PAVEMENT TO EDGE OF TRENCH WIDTH)

CONCRETE DRIVEWAYS

- 6" ITEM 452 PLAIN PORTLAND CEMENT (M/S)
- VARIES ITEM 304 AGGREGATE BASE (COST TO BE INCLUDED WITH COST OF WATERLINE)
- (REPLACEMENT TO BE FROM EDGE OF PAVEMENT TO NEAREST EXPANSION JOINT)

STONE & GRAVEL DRIVEWAYS

- 5" ITEM 411 STABILIZED CRUSHED AGGREGATE, OR AGGREGATE TO MATCH EXISTING, PER OWNER'S REQUEST.
- VARIES ITEM 304 AGGREGATE BASE (COST TO BE INCLUDED WITH COST OF WATERLINE)

PAVEMENT ITEMS & QUANTITY PER TRENCH DETAILS

WHERE EXISTING PAVEMENT SURFACE AND/OR BASE IS DAMAGED OR UNDERMINED AS DETERMINED BY THE ENGINEER, REPLACEMENT OR REPAIRING AS DETAILED ABOVE SHALL BE REQUIRED. THE COST OF PAVEMENT OR REPLACEMENT SHALL BE INCLUDED IN THE UNIT PRICE BID FOR PERTINENT ITEMS.

DRAWN A.L.L.
CHECKED R.M.S.
DATE JULY 2016